

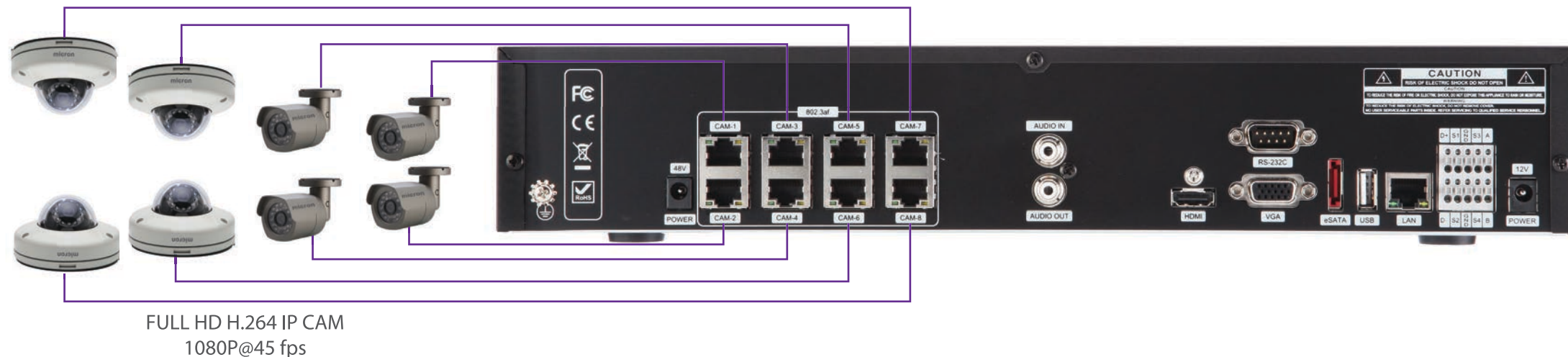
Model	4004	4008	4016
SYSTEM			
Video System	NTSC / PAL (IP)		
IP Camera	4ch PoE	8ch PoE	8ch PoE
IP Resolution	D1, 720p, 1080p		
Video Output	VGA/HDMI (upto 1920x1080p)		
Audio Input / Output	1 (RCA) / 1 (RCA)		
Audio Input Level	0.5~1.4 Vp-p @ 20K Ohm		
Sensor Input / Output	4 input / 1 relay output		
External Port	RS-232 / RS485		
USB Port	2 Ports (Front / Rear)		
Mouse	USB mouse		
IR Remote Controller	YES		
RECORDING			
Video/Audio Compression	H.264 Codec		
Maximum Rate & Resolution	100/120pps @ 1080p	200/240pps @ 720p	400/480pps @ D1
Record Mode	Manual, Schedule, Event (motion/sensor)		
Quality	Ultra, Super, High, Middle, Low (5 levels)		
Pre/Post Recording	~5sec / ~300sec		
Motion Detection	Support from IP Camera		
Watermark Proof	YES		
PLAYBACK			
Search Mode	Calendar, Time, Event, Thumb-nail, Instance		
Playback Speed	0.25x ~ 1x ~ 16x FF/REW, field by field		
STORAGE			
HDD Support	2 internal SATA HDDs bay (Up to 8TB)		
ODD Support	NO		
external Storage	e-SATA (1 port) / USB (2 port)		
Backup device	USB-DVD±RW / USB flash driver / Network		
OSD			
Display Division	1, 4, 6, 7, 9, 13, 16		
Title	Multi language / 12 characters		
GUI	YES		
Digital Zoom	2x, 4x, 8x, 16x		
NETWORK			
Multi Streaming	YES		
Network Compression	H.264 (from IP Camera)		
Network Users	1+10		
Client Software	client viewer / Windows (active-X) / mac PC / 3G mobile Phone		
EMS 2.0	Support		
Remote Notification	Email message		
Service	TCP/IP, SMTP, DHCP, DDNS, uPnP		
OTHER			
Firmware Update	USB Flash Stick / Network		
Daylight Saving	YES		
Recovery	Auto Reboot		
Accounts	1 administrator / 20 users / user authority selectable		
Log	Event log (50000) / System log (20000)		
Watchdog	software / hardware watchdog		
Dimension	38 X 34 X 7 (cm)		
Power Source	12V 5A Adpater (set), 48V Adpater(PoE)		
Operation Environment	30 ~ 80% RH, 5℃ ~ 40℃ (41°F ~ 104°F)		



**micron IP** **Full HD 1080p** **PLUG&PLAY** **BLACK DIAMOND HD**







## Professional IP camera series



### CMI 400



- Indoor / Outdoor
- 1/2.8" Sony 2M CMOS sensor
- H.264 1080P@45fps
- Dual Codec(H.264/MJPEG)
- Triple streaming (HD/SD Live, HD Rec)
- 3D-DNR, D-WDR, Defog, Motion
- f=4mm Fixed Board Lens
- 12ea IR LEDs (Max. 10M), ICR (Option)
- Micro SD/SDHC slot / IP66
- Built-in PoE & DV12V

### CMI 401



- Indoor / Outdoor
- 1/2.8" Sony 2M CMOS sensor
- H.264 1080P@45fps
- Dual Codec(H.264/MJPEG)
- Triple streaming (HD/SD Live, HD Rec)
- 3D-DNR, D-WDR, Defog, Motion
- f=4mm Fixed Board Lens
- 12ea IR LEDs (Max. 10M), ICR
- Removable IR Cut Filter (TDN)
- Micro SD/SDHC slot / IP66
- DC12V & PoE

### CMI 410



- Indoor
- 1/2.8" Sony 2M CMOS sensor
- H.264 1080P@45fps
- Dual Codec(H.264/MJPEG)
- Triple streaming (HD/SD Live, HD Rec)
- 3D-DNR, D-WDR, Defog, Motion
- f=2.8~12mm Auto IRIS Varifocal Lens
- 30ea IR LEDs
- Removable IR Cut Filter (TDN)
- Micro SD/SDHC slot / IP68
- DC12V & PoE

### CMI 413



- Indoor
- H.264 1080P@45fps
- Dual Codec(H.264/MJPEG)
- Triple streaming (HD/SD Live, HD Rec)
- f=3.5~16mm A/F zoom
- f=4.3mm fixed
- 20ea IR LEDs (Max. 15M) (Option)
- Two-way Audio / RS-485 / CVBS
- DC12V/AC24V & PoE

### CMI 440



- H.264 1080P@45fps
- Dual Codec(H.264/MJPEG)
- Triple streaming (HD/SD Live, HD Rec)
- C/CS mount (DC IRIS)
- Two-way Audio / RS-485 / CVBS
- DC12V/AC24V & PoE

### CMI 450



- Outdoor vandal proof
- 1/2.8" Sony 2M CMOS sensor
- H.264 1080P@45fps
- Dual Codec(H.264/MJPEG)
- Triple streaming (HD/SD Live, HD Rec)
- 3D-DNR, D-WDR, Defog, Motion
- f=2.8~12mm Auto IRIS Varifocal Lens
- 40ea IR LEDs
- Removable IR Cut Filter (TDN)
- Micro SD/SDHC slot / IP68
- DC12V & PoE

### CMI 453



- Outdoor vandal proof
- H.264 1080P@45fps
- Dual Codec(H.264/MJPEG)
- Triple streaming (HD/SD Live, HD Rec)
- f=3.5~16mm A/F zoom
- f=4.3mm fixed
- 20ea IR LEDs (Max. 15M) (Option)
- Two-way Audio / RS-485 / CVBS
- IP68, DC12V/AC24V, PoE

### CMI 455



- 1/2.8" Sony 2M CMOS sensor
- H.264 1080P@45fps
- Dual Codec(H.264/MJPEG)
- Triple streaming (HD/SD Live, HD Rec)
- 3D-DNR, D-WDR, Defog, Motion
- f=2.8~12mm Auto IRIS Varifocal Lens
- 42ea IR LEDs
- Removable IR Cut Filter (TDN)
- Micro SD/SDHC slot / IP66
- DC12V & PoE

### CMI 495



- H.264 1080P@45fps
- Dual Codec(H.264/MJPEG)
- Triple streaming (HD/SD Live, HD Rec)
- f=3.5~16mm A/F zoom
- 66ea IR LEDs (Max. 50M)
- Two-way Audio / RS-485 / CVBS
- DC12V/AC24V & PoE, IP68

### CMI 505



- H.264 1080P@45fps
- Dual Codec(H.264/MJPEG)
- Triple streaming (HD/SD Live, HD Rec)
- 20x Optical, 12x Digital Zoom
- 0.1°~300°/s(Pan), 90°/s(Tilt), 360°/s(Preset)
- Two-way Audio / RS-485 / CVBS
- AC24V, IP67

**ALL CAMERAS FEATURE  
SD CARD CAPABILITY**

## 16CH HD IP CMS Software



- ▶ 16Ch Live
- ▶ 16Ch Recording
- ▶ 16Ch Playback
- ▶ Time Search
- ▶ Setup
- ▶ Screen Capture
- ▶ Log Search
- ▶ Two Way Audio
- ▶ Auto Scan

### EASY SET UP



No need to set the each camera one by one by web browser or secondary video-BNC output. Using IP CMS, you can set all of cameras with the entire setup for Live and Record mode.

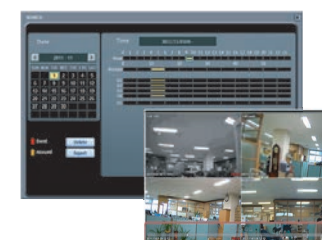
### EASY SCANNING



Automatically Discover or Manually refresh the list of devices on the network.

IP CMS software is very powerful and easy software to setup and manage your IP cameras. It is capable of maximum 16Ch Live-viewing, 16Ch simultaneous Recording and 16Ch playback. Digital PTZ function and two way audio are available. In addition, "IP Discovery" allow you scan the all IP cameras in your network and change their IP addresses easily. So, Scan it, program it and monitor it. You can even access your IP cameras with mobile phone. IP monitoring is now easier than ever.

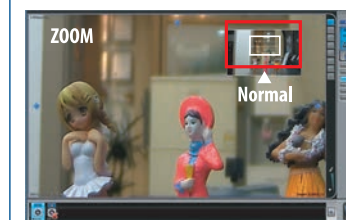
### EASY SEARCH & PLAYBACK



Easy search and playback by Time table and Time bar for Multi-screen or 1ch display.

- Playback start / stop
- Live View / Playback

### DIGITAL PTZ ZOOM



Easy to control the digital Pan/Tilt/Zoom by 4 direction control panel for Multi-screen or 1ch display.

**PoE**